



COMBUSTION SERVICE & EQUIPMENT CO.®

2016 Babcock Boulevard · Pittsburgh, PA 15209
412.821.8900 · FAX: 412.821.2644 · www.combustionservice.com

Costar contract #008-126

Now a participating partner

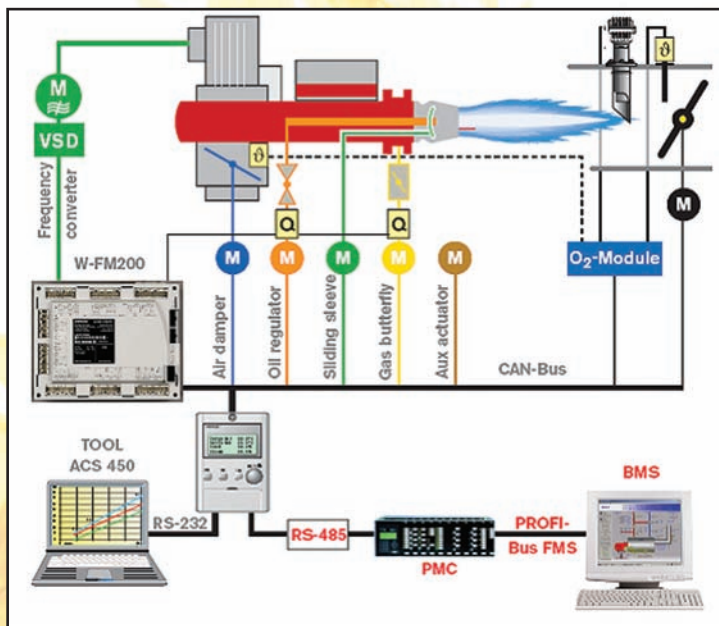
COSTARS™

A Better Way of Burning Digester Gas!

The **-weishaupt-** Difference

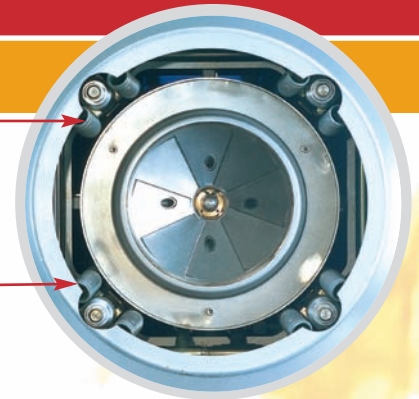
The burning of biogas from a digester is no easy task. One of the common problems we see with burning biogas is damaged combustion heads. With Weishaupt burners, the combustion heads are made of high quality stainless steel alloy. This ensures years of reliable trouble-free service. Weishaupt burners come standard with linkage-less controls, this means no down-time when switching from digester to natural gas. The WF-M System allows separate fuel curves for digester and natural gas, it can even provide simultaneous operation.

Linkage-less Controls are Standard

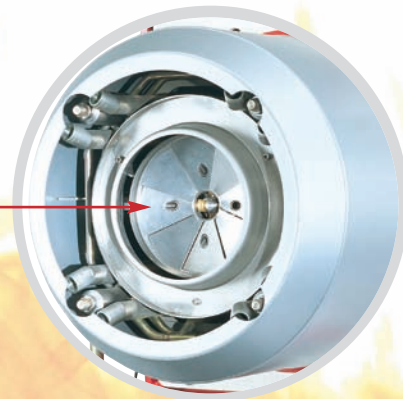


All Weishaupt burners are equipped with state-of-the-art WF-M Linkage-less controls. These controls provide a high degree of accuracy and repeatability on all fuels. Weishaupt burners are also designed with the latest technology, maximizing efficiency and reduced fuel usage. **Typical savings after burner replacement is 8-10%.**

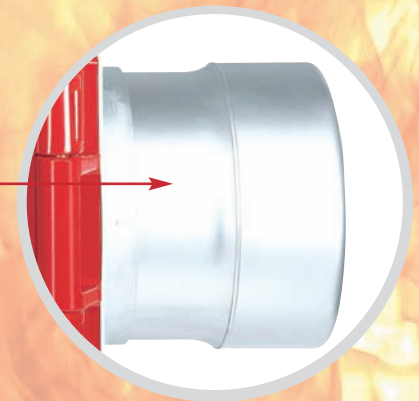
Contact CS&E for more information on the product or to request a meeting at your site!



There are no gas spuds to change, therefore switch over is easily performed electronically.



All components including the diffuser are made from stainless steel.



High quality stainless steel combustion head rated for 2000°F.

